



INSPIRED WATERFRONT LIVING



TAO

TOWNHOME COLLECTION

TAO

TOWNHOME COLLECTION



Preliminary Artist's Concept

LENNAR



Plans and elevations are artist's renderings and may not accurately represent the actual condition of a home as constructed, and may contain options which are not standard on all models. Lennar reserves the right to make changes to these floor plans, specifications, dimensions and elevations without prior notice. Stated dimensions and square footage are approximate and should not be used as representation of the home's precise or actual size. Any statement, verbal or written, regarding "under air" or "finished area" or any other description or modifier of the square footage size of any home is a shorthand description of the manner in which the square footage was estimated and should not be construed to indicate certainty. See a Lennar new home consultant for further information. Garage sizes may vary from home to home and may not accommodate all vehicles. Void Where Prohibited By Law. Copyright © 2016 Lennar Corporation. Lennar and the Lennar logo are registered service marks or service marks of Lennar Corporation and/or its subsidiaries. CGC 082343, 07/16

PRELIMINARY OVERALL COMMUNITY SITE PLAN



Preliminary Artist's Concept

COMMUNITY AERIAL VIEW



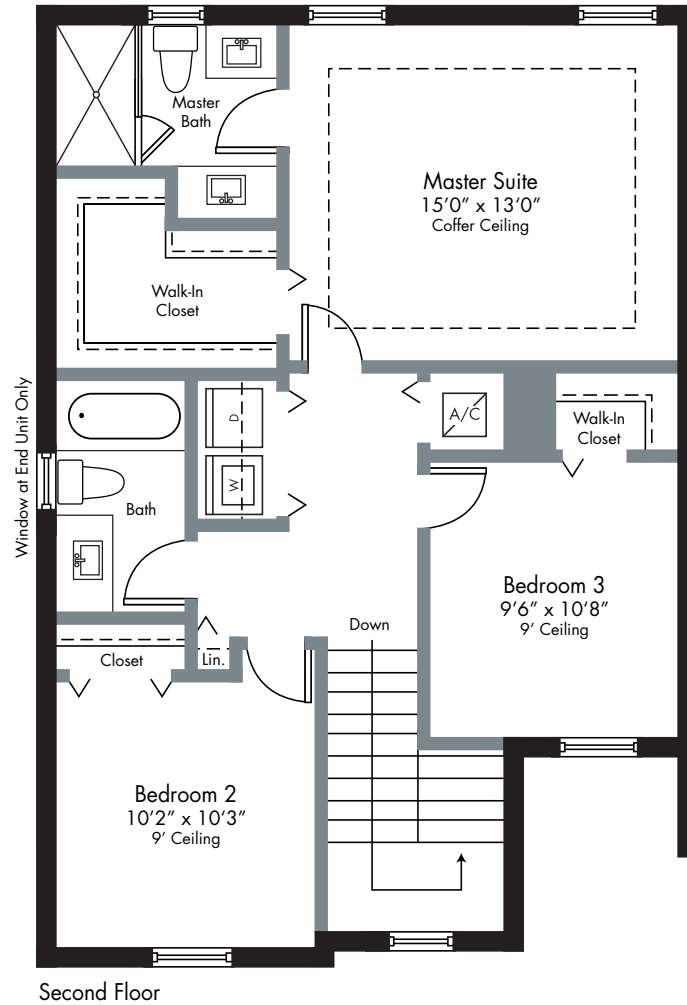
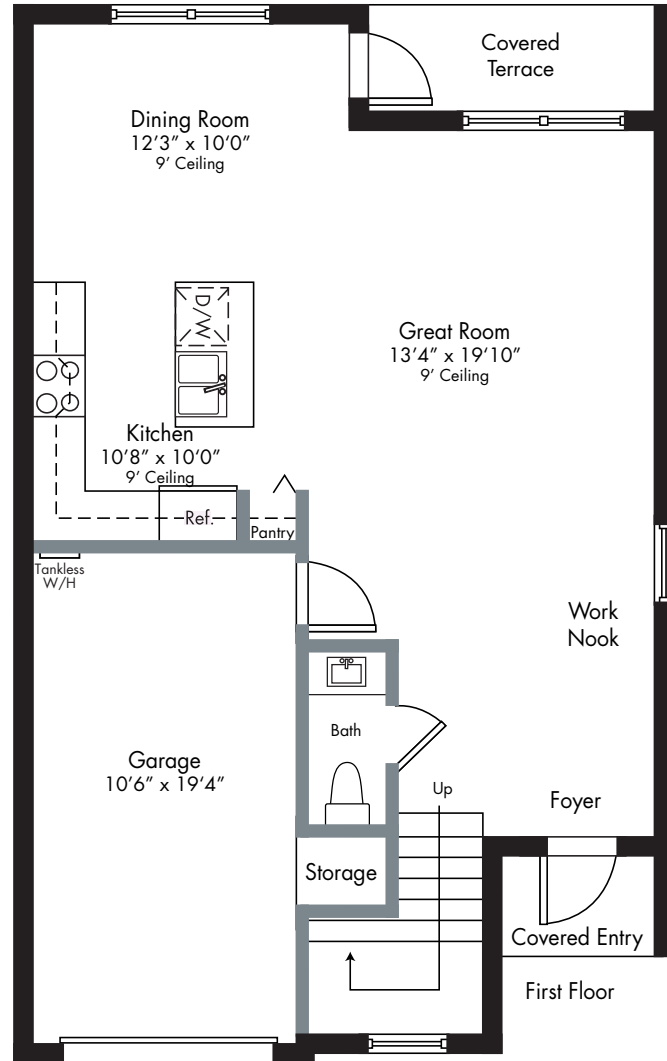
Preliminary Artist's Concept



AGATE

TAO - TOWNHOME COLLECTION

2-STORY | 3 BEDROOMS | 2.5 BATHS | GREAT ROOM | COVERED TERRACE | GARAGE



1,593 Sq. Ft. A/C Area
 217 Sq. Ft. Garage
 24 Sq. Ft. Entry

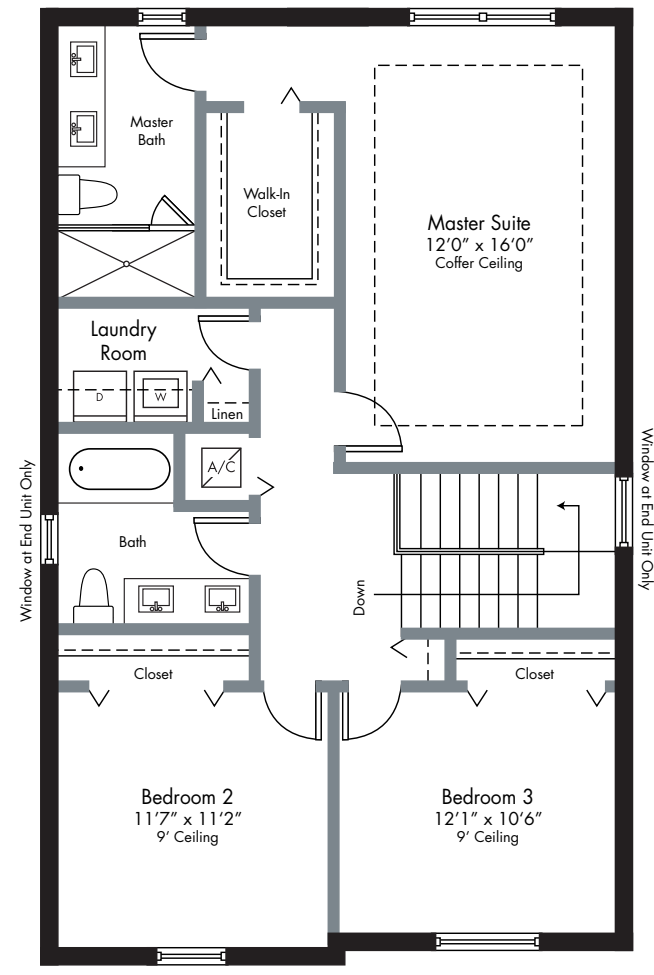
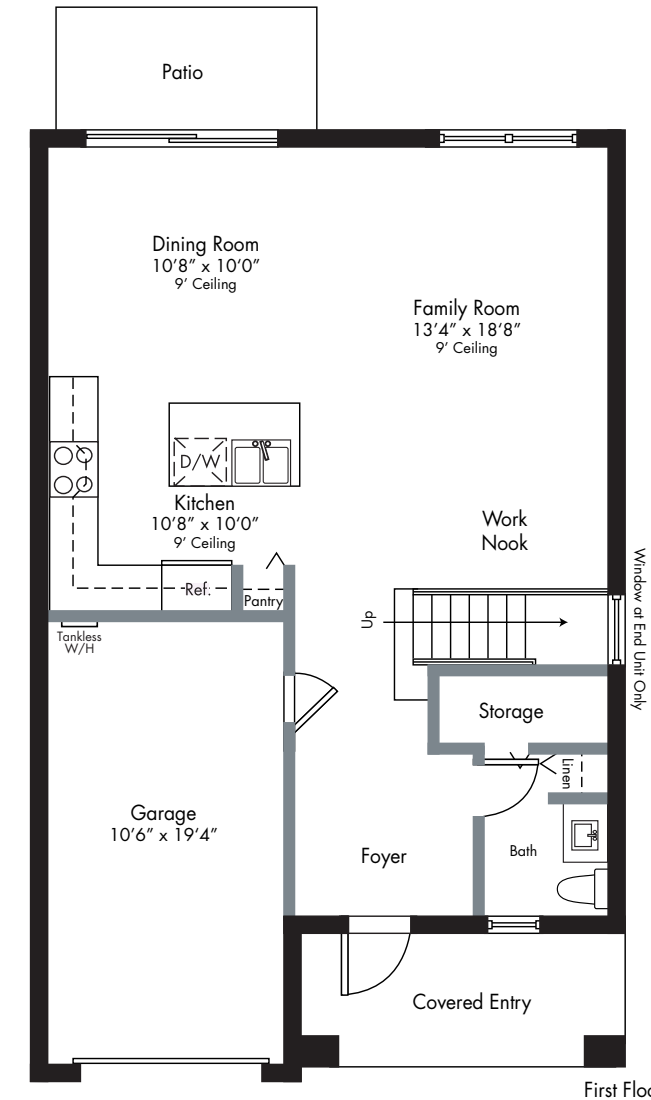
 1,834 Sq. Ft. Total

Preliminary Artist's Concept

CITRINE

TAO - TOWNHOME COLLECTION

2-STORY | 3 BEDROOMS | 2.5 BATHS | FAMILY ROOM | GARAGE



1,750 Sq. Ft. A/C Area
 221 Sq. Ft. Garage
 79 Sq. Ft. Entry

 2,050 Sq. Ft. Total

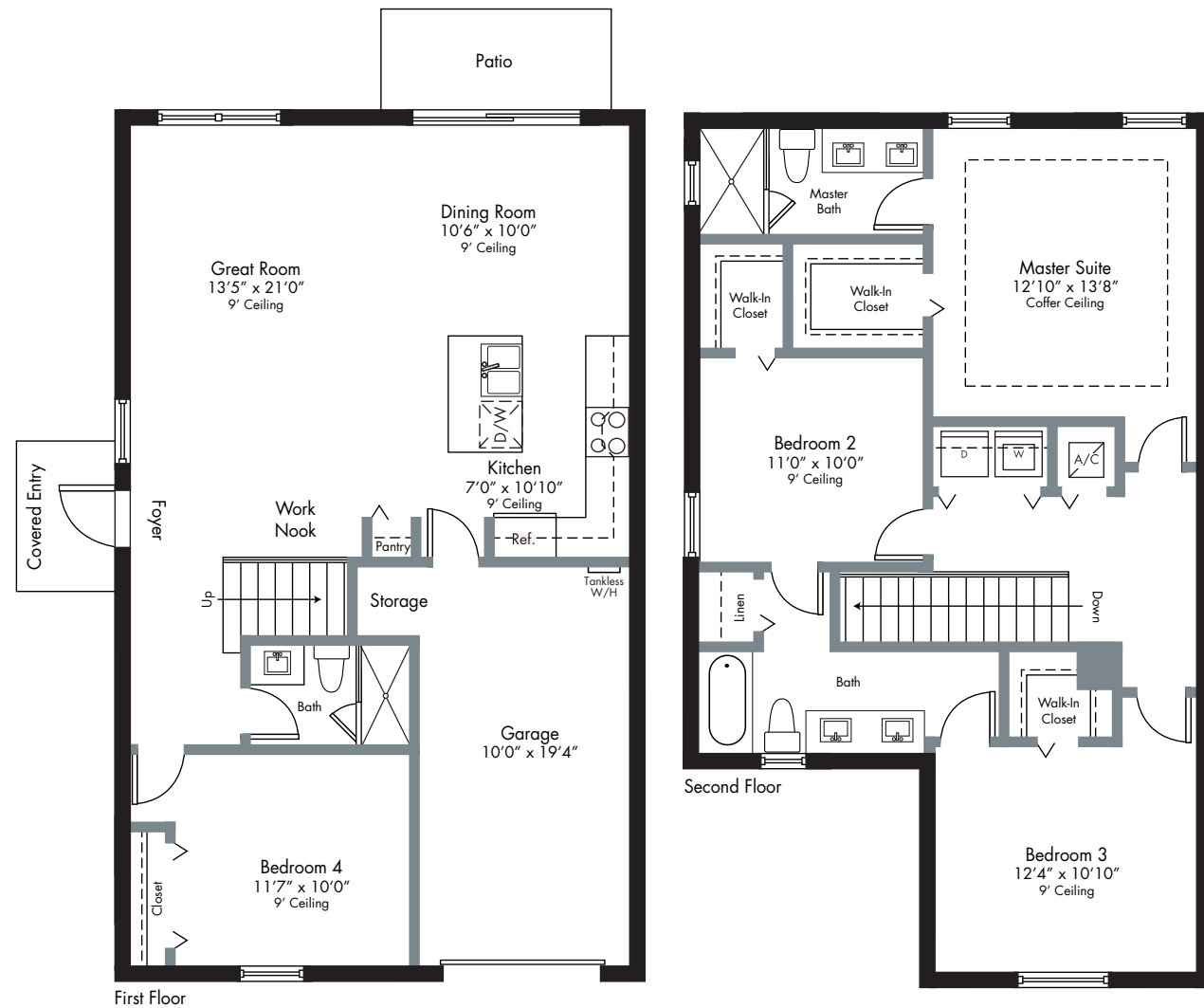
Preliminary Artist's Concept

JASPER

TAO - TOWNHOME COLLECTION

2-STORY | 4 BEDROOMS | 3 BATHS | GREAT ROOM | GARAGE

This plan available on corner homesites only



1,799 Sq. Ft. A/C Area
 207 Sq. Ft. Garage
 37 Sq. Ft. Entry

 2,043 Sq. Ft. Total

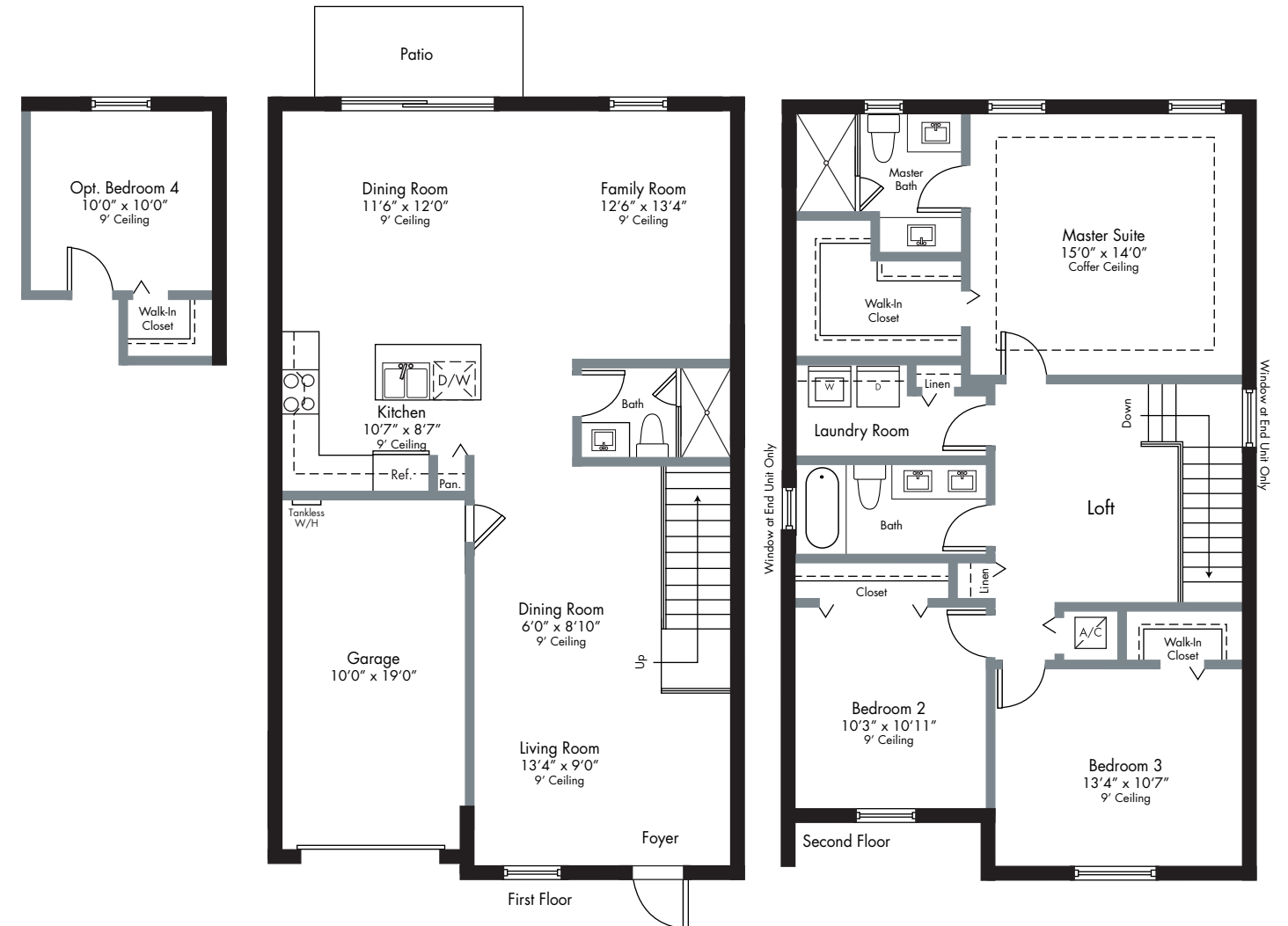
Preliminary Artist's Concept

MOONSTONE

TAO - TOWNHOME COLLECTION

2-STORY | 3 BEDROOMS (OPTIONAL BEDROOM 4) | 3 BATHS | FAMILY ROOM

LOFT | GARAGE



1,851 Sq. Ft. A/C Area
 210 Sq. Ft. Garage
 59 Sq. Ft. Entry

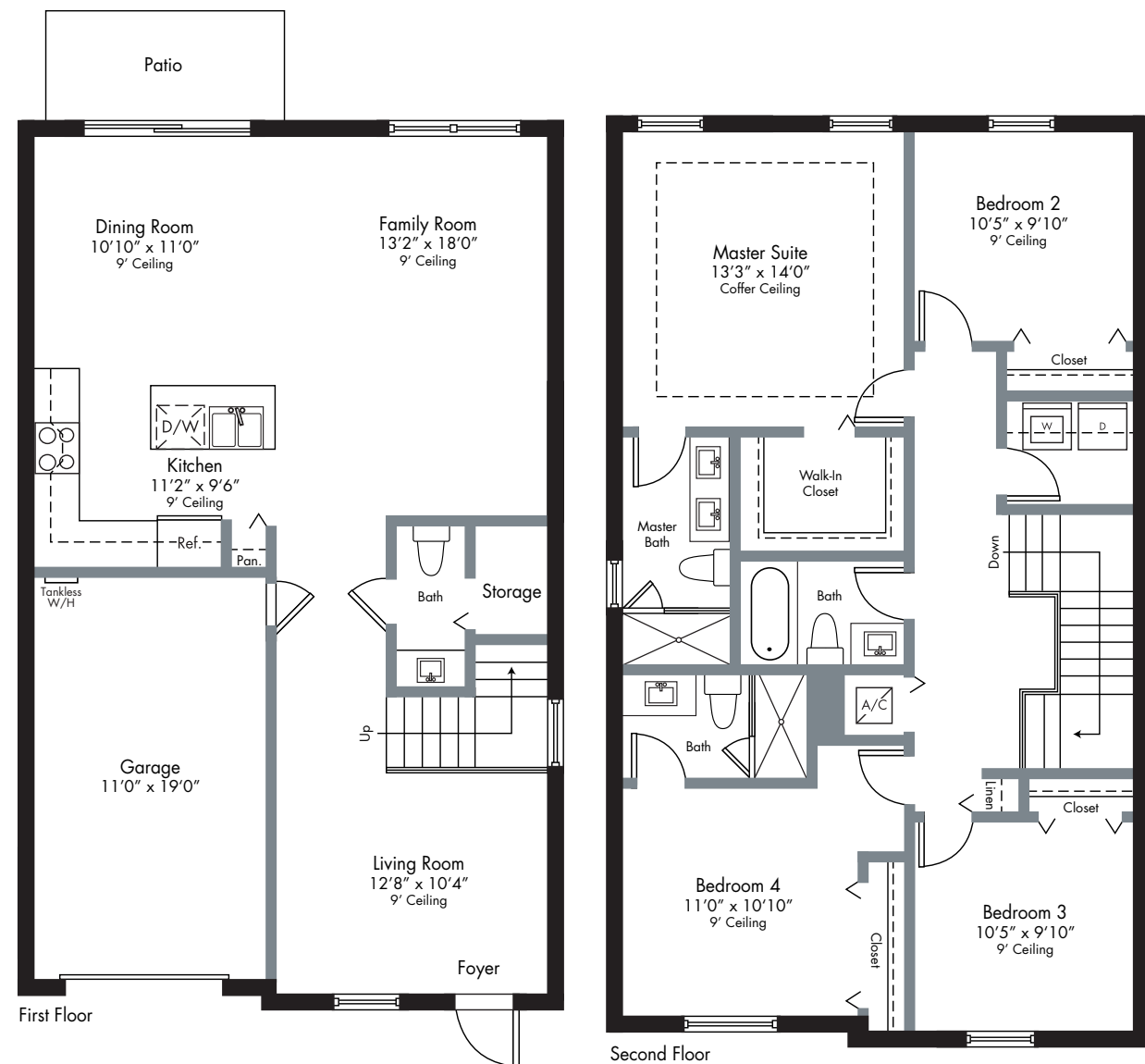
 2,120 Sq. Ft. Total

Preliminary Artist's Concept

QUARTZ

TAO - TOWNHOME COLLECTION

2-STORY | 4 BEDROOMS | 3.5 BATHS | FAMILY ROOM | GARAGE



1,906 Sq. Ft. A/C Area
 225 Sq. Ft. Garage
 88 Sq. Ft. Entry

 2,219 Sq. Ft. Total

Preliminary Artist's Concept

LENNAR



TAO

TOWNHOME COLLECTION

EI - Features

COMMUNITY FEATURES

- Built and Marketed by Lennar, a Fortune 500 Company Listed on the New York Stock Exchange (LEN), one of the Nation's Leading Homebuilders since 1954
- Satori, a Premier Gated Waterside Community with Uniquely Designed Townhomes and Estate Homes, all Embracing a Magnificent 67-acre Lake
- Satori is Part of Lennar's Serenity Collection, a New Concept in Home Designs Offering Elegant and Innovative Elevations and Floorplans
- Future Iconic Entry Monuments
- Future Lakeside Clubhouse with:
 - Resort-style Pool and Spa
 - Children's Waterpark and Playground Area
 - Fully-equipped Fitness Center
- Future Intimate Park Area with:
 - Decorative Trellis'
 - Zen-inspired Garden with Gazebos
 - Relaxing Green Areas with Serene Walking Paths
- Conveniently located with immediate access to Shopping, Places of Worship, Schools and Major Thoroughfares
- Located within a Community Development District (CDD) Ask a Lennar New Home Consultant for details

EXTERIOR FEATURES

- 2-Story Concrete Block Construction
- Flat Concrete Roof Tile
- Designer Exterior Paint in Decorator Schemes
- Code Compliant Hurricane Panels
- Flat Panel Hurricane Code Approved Garage Door
- Automatic Garage Door Opener with Remote
- Impact Rated Glazed Front Door
- Exterior Hose Bibs
- Exterior Front Elevation Coach Lights or High-Hats (Per Plan)
- Decorative Outlookers on Front Elevation (Per Plan)
- Bronze Color Window Frames Throughout
- Brick Paved Covered Entry, Patio Areas and Covered Terrace (Per Plan), and 2-car Driveway

INTERIOR FEATURES

- Alarm System with Key Pad
- Gypsum Flooring Underlayment on Second Floor
- 18"x18" Ceramic Tile in Foyer, Kitchen, Breakfast Area, Family Room and Laundry Room in Choice of Decorator Colors
- Carpeting in Living Room, Dining Room, All Bedrooms, Hallways and Stairways with Padding in Choice of Decorator Colors
- Raised Panel Interior Doors
- Raised Panel Bi-Fold Closet Doors
- Modern Style Baseboards and Door Casings
- Contemporary-Style Recessed Hi-Hats Throughout Home
- Brushed Nickel Stair Railings & Wood Handrail (Per Plan)
- Decorative Wall Sconces in Stairwell (Per Plan)
- Home Automation with NEXIA™ Home Intelligence with:
 - Wireless Keypad Lock
 - Light Module
 - Connected Thermostat for Central A/C and Heating System
 - Security Camera
- Lever Style Interior Door Hardware
- Smooth Finish Walls and Textured Ceilings Throughout Home
- Designer Quality Paint on all Walls and Ceilings
- Rocker Style Switches Throughout Home

INTERIOR FEATURES (CONTINUED)

- Category 5e Structured Wiring for Phone in Kitchen only. Family Room and all Bedrooms Wired for Internet, Home Run to Central Distribution Panel
- RG6 Shielded Coaxial Television Cable in all Bedrooms and Family Room, Home Run to Central Distribution Panel
- Pre-wired for Ceiling Fan in Family Room and all Bedrooms
- Decorative Marble Windowsills Throughout
- Smoke and Carbon Monoxide Detectors Throughout
- Electric Water Heater
- Central Air Conditioning and Heating System with Programmable Thermostat
- Vinyl-Clad Ventilated Closet Shelving

KITCHEN FEATURES

- Quality Stainless Steel Appliance Package Featuring:
 - Side-by-Side Refrigerator with Ice and Water Dispenser in Door
 - 30" Drop-in Glass Cook Top
 - Energy Saving Dishwasher
 - Microwave with Recirculating Venting System
 - Built-in Conventional Oven
- 36" Contemporary-Style Cabinetry with Brushed Nickel Hardware • Quartz Countertops with Square Edge and 6" Backsplash
- Stainless Steel Undermount Kitchen Sink
- Designer Brushed Nickel Single Lever Pull-Out Faucet
- Food Waste Disposal
- Recessed Overhead Lighting

BATH FEATURES

- Master Bathroom
 - Floating Cabinets with White Quartz Countertops and Vessel Sinks
 - Recessed Lighting
 - "Rain-Style" Shower Head with Handheld Sprayer
 - Shower Floor in Elegant "Pebble" Style Stone
 - Clear Glass Shower Enclosure
- Secondary Bathrooms
 - Contemporary-Style Cabinets with Elegant Cultured Marble Vanity Tops and Brushed Nickel Hardware
 - Designer Style Lighting Over Vanities
- Elongated Toilets
- 12"x24" Ceramic Floor Tile
- Mirrored Medicine Cabinet (Per Plan)
- Full Width Vanity Mirrors
- Exhaust Fans
- Designer Faucets

LAUNDRY FEATURES

- Large Capacity Washer
- Large Capacity Dryer
- Ventilated Wire Shelving above Washer/Dryer



Plans and elevations are artist's renderings and may not accurately represent the actual condition of a home as constructed, and may contain options which are not standard on all models. Lennar reserves the right to make changes to these floor plans, specifications, dimensions and elevations without prior notice. Stated dimensions and square footage are approximate and should not be used as representation of the home's precise or actual size. Any statement, verbal or written, regarding "under air" or "finished area" or any other description or modifier of the square footage size of any home is a shorthand description of the manner in which the square footage was estimated and should not be construed to indicate certainty. See a Lennar new home consultant for further information. Garage sizes may vary from home to home and may not accommodate all vehicles. Void Where Prohibited By Law.

The specific features, amenities, floor plans, elevations, square footage, and designs vary per plan and community and are subject to changes or substitution without notice. We reserve the right to substitute equipment, material, appliances and brand names with items of equal or higher, in our sole opinion, value. Color and size variations may occur. The prices of our homes, included features, and available locations are subject to change without notice. Please see the actual home purchase agreement for additional information, disclosures and disclaimers relating to the home and its features. Void where prohibited by law. Proposed amenities for the community are subject to changes, substitutions and/or deletions without notice. Lennar makes no representation or guarantee that the community or any amenities will be built out as currently planned. Copyright © 2016 Lennar Corporation. Lennar, the Lennar logo, and the Everything's Included logo are registered service marks of Lennar Corporation and/or its subsidiaries. CGC - 062343_07/16



LENNAR®